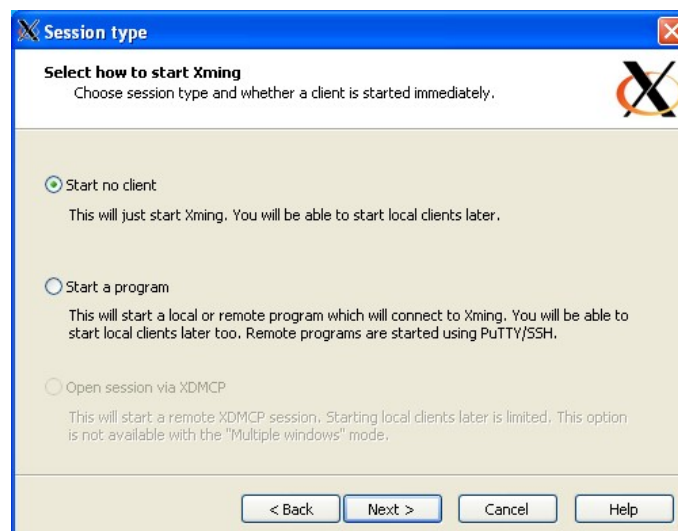
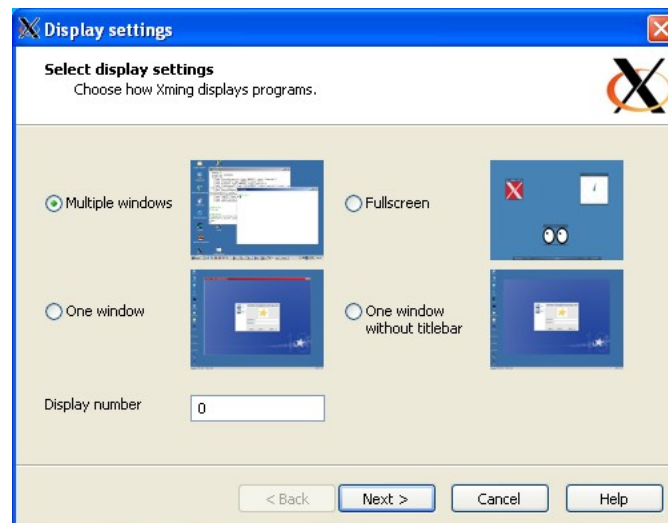


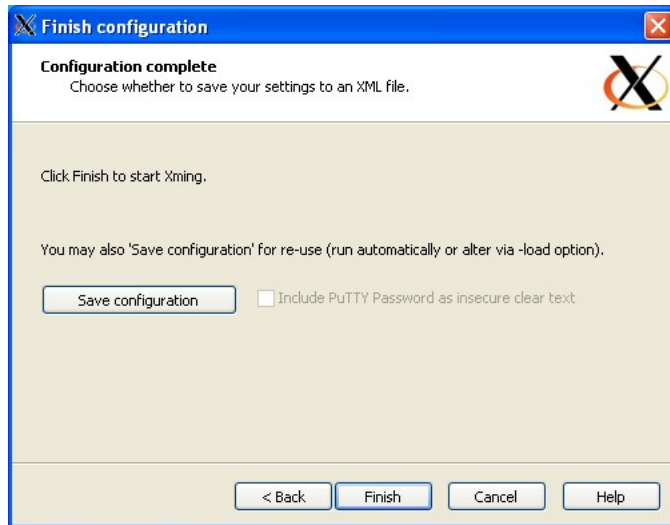
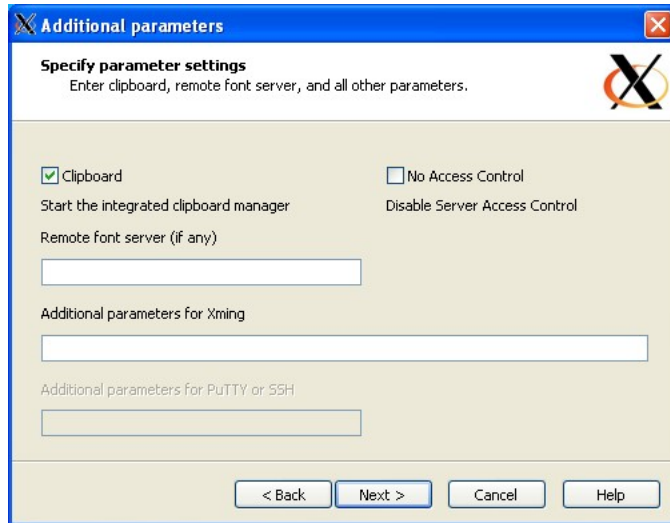
Configuring Your Windows Computer to SSH to the Computer Science Network

You can set up your Windows computer to connect to a Linux Lab computer, essentially making the PC a terminal. The PC interacts with the server through the X-windows system, forwarding the display from the server (Linux Lab computer) to the PC. Software must be installed on the PC to make this link work and the best software (so far) for this task is the **PuTTY** terminal emulator and the **Xming** X-window client.

Configuring Xming

- Download Xming from this web link:
 - <http://www.straightrunning.com/XmingNotes/>
 - Download Xming or Xing-x64 (depending upon your operating system) version 6.9.0.31 and install
 - Configuring Xming:
 - Once Xming is installed, run the application called 'XLaunch' and verify that the settings are as shown:





- Save the configuration and close XLaunch

Configuring Putty

- Download Putty from this web site:
 - <http://www.chiark.greenend.org.uk/~sgtatham/putty/>
 - Click on *Download Putty* link
 - Download **putty.zip** and uncompress
 - In the Putty folder left-double-click on putty.exe.
 - Dialog box appears.
- Putty configuration & login in:
 - Once Putty is opened you have to configure it. The **Session** dialog box opens by default.
 - In the Host Name (or IP address) window type in the Fully Qualified domain Name (FQDN) of eniac (**eniac.cs.hunter.cuny.edu**) or eniac's IP address (**146.95.214.131**).
 - In the Saved Session window type a file name to save the configuration info. I suggest your initials.putty.config (mine is **tbw.putty.config**)
 - Click on the plus sign next to SSH and then click on X11.
 - Click and enable X11 forwarding
 - In the **X display forwarding** box type in "**localhost:0.0**"
 - Click on the **Open** button.
 - You may get the following message:
 - *The authenticity of host 'eniac (146.95.214.131)' can't be established. RSA key fingerprint is d2:0b:07:c5:9f:b4:ba:ac:d6:21:01:f9:ab:25:97:d4. Are you sure you want to continue connecting (yes/no)?*
 - Enter "**yes**" and proceed.
 - A black dialog box will appear with the prompt: **login as:**
 - Type in your Linux Lab user name. Remember, it is case sensitive.
 - A message will appear.... READ IT.....
 - Now type in your password.
 - A new prompt will appear. If you still have the default prompt it will be: **-bash-3.2\$**
 - You are now logged into eniac.
 - Eniac doesn't have any user software installed. It is used an SSH server only. You have to log into one of the Linux Lab computers to have access to software.
 - You do have access to your home directory and all of your files on eniac so if all you want to do is download or upload files you can do it from eniac.
- Logging into a Linux Lab computer from eniac:
 - Choose any of the Linux Lab computers cslab2, cslab3, cslab4..... cslab26) to log into.
 - Type the following command: **ssh -X cslab13**
 - **You may encounter the following message:**
 - *The authenticity of host 'cslabxx (146.95.214.xx)' can't be established. RSA key fingerprint is d2:0b:07:c5:9f:b4:ba:ac:d6:21:01:f9:ab:25:97:d4. Are you sure you want to continue connecting (yes/no)?*
 - Answer "**yes**"